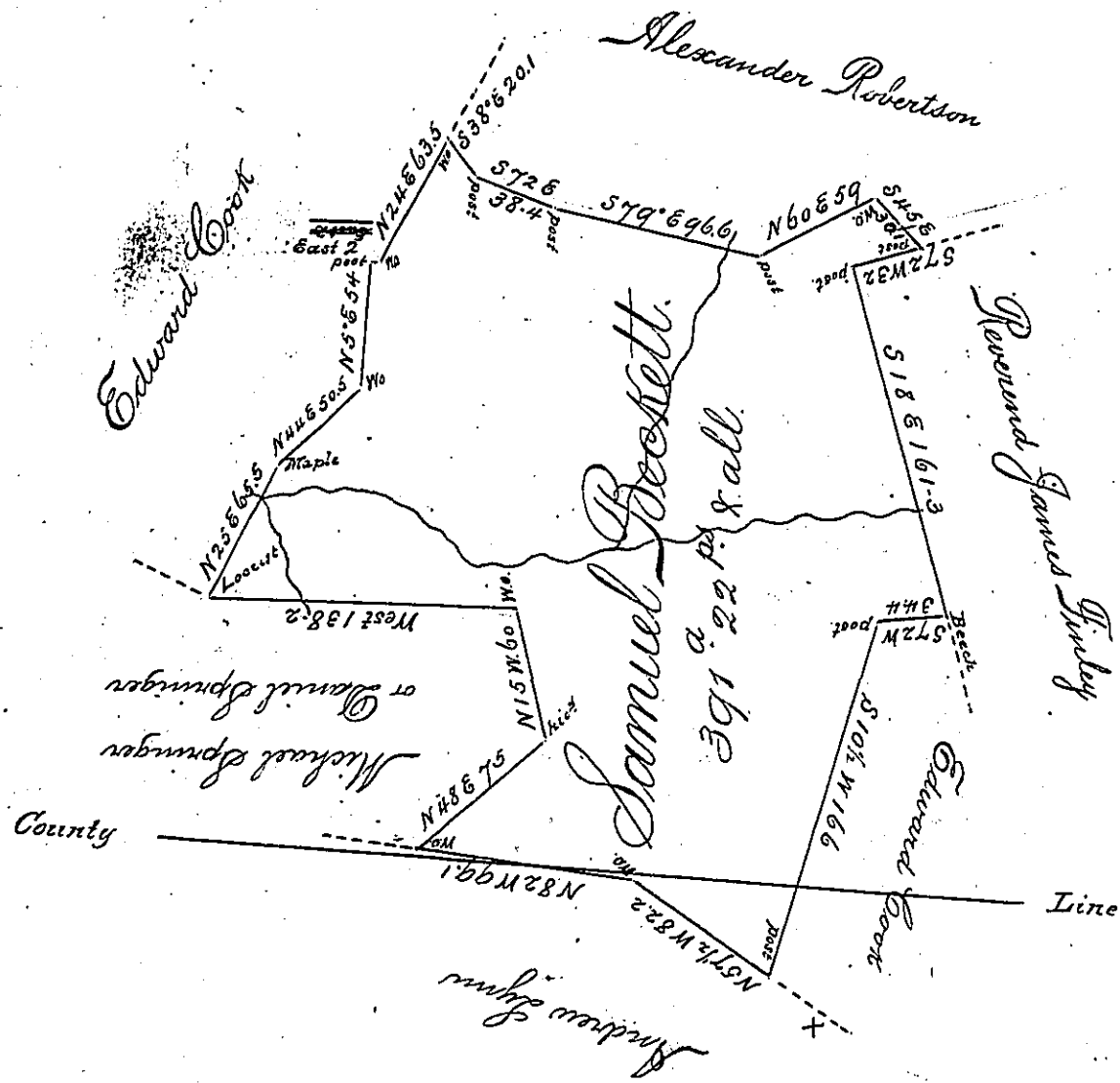


Note: this Survey was made while I was Surveyor of that part of Westmoreland County embracing Rostraver Township & even there - been another appointment it has always been a Custom where Surveys are on both sides either might execute  
 A. E. S. G. I.  
 A. M. Clean

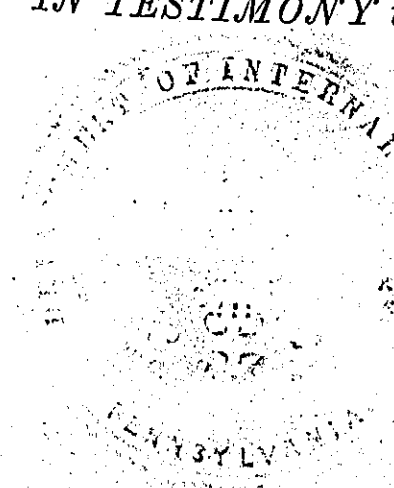


Situate on the Waters of Spears Run part in Rostraver Township Westmoreland County and part in Washington Township Fayette County and Surveyed the 25<sup>th</sup> day of July 1795 In pursuance of a Warrant dated the 13<sup>th</sup> day of February 1795.

p/ Alexander M. Clean Deputy

Andrew Porter Esquire  
 Surveyor General

IN TESTIMONY that the above is a copy of the original remaining on file in the Department of Internal Affairs of Pennsylvania, made conformably to an Act of Assembly approved the 16th day of February, 1833, I have hereunto set my Hand and caused the Seal of said Department to be affixed at Harrisburg, this sixth day of December 1898.



James W. Latta  
 Secretary of Internal Affairs.